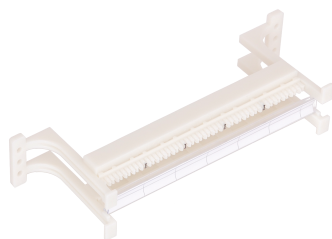


## NMC-CB110-50L

110 type wall-mounted switching unit , with legs



110 type crosses are used for cutting cables of various SCS subsystems on them. The main advantage is patch each individual pair, providing high flexibility in cabling reconfiguration. Connection and switching is carried out using 110 type connectors or appropriate patch cords. The breakout boxes are usually wall-mounted and come in two configurations, with and without built-in plastic mounting feet. The option with legs provides more convenient cable routing. To work more conveniently with 110 blocks, labels are applied to the mounting grooves every 5 pairs. The leg units are also labeled with removable transparent holders.

Switching units **NMC-CB110-50L** and **NMC-CB110-50NL** have 50 pairs. For sealing 110 panels, blocks and connectors, it is recommended to use the **NMC-315DR punch down tool** of several pairs simultaneously (4 or 5, depending on the nozzle). It facilitates greatly and speeds up the work.

### Ordering Table

P/N	Number of pairs	Type	Individual packaging		Group packing		Transport packaging			
			Volume, m3	Weight, kg	Quantity	Dimensions, mm	Weight, kg	Quantity	Dimensions, mm	Weight, kg
NMC-CB110-50		With legs	0.00086	0.115	6 pcs	280x100x280	1	60 pcs	580x530x300	10.2

**Detailed characteristics**

Characteristic	Value
Type	With legs
Temperature ranges	Storage from -40 to +70 °C. Installation from 0 to +50 °C. Operation from -10 to +60 °C
Warranty	1 year
Number of ports	50
Plastic material	Conforms to UL 94V-0
Marking	Every 5 pairs
Installation	Wall
Protection level	White
Packaging	Individual - cardboard box, 10 pcs