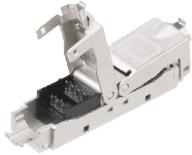


## NMC-CCSA22C-MT

NIKOMAX In-line Coupler, cat. 6a, IDC-IDC, Shielded



NIKOMAX In-line coupler are designed for installation in faceplates, surface mounting boxes and modular patch panels. In-line coupler are widely used for connection workplaces to local network.

**NMC-CCSA22C-MT** In-line coupler with IDC comply with category 6 and are shielded, connectors are made in cast, fully shielded zinc-aluminum alloy housings. IDC coplers are universal and functional solutions for connecting two cable segments. IDC plunge connections provide a reliable and high-quality connection, unlike RJ45-RJ45 connectors, which have little effect on the line. Supplied individually, in an individual polyethylene bag with perforation – similar to switching modules.

### Ordering Table

P/N	Cat.	Type.	Individual package		Group package		Freight package			
			Dimensions, mm	Weight, kg	Quantity	Dimensions, mm	Weight, kg	Quantity	Dimensions, mm	Weight, kg
NMC-CCSAE:6a		Shielded	-	0.031	25	210x140x100	-	250	535x313x234	10.000

**Detailed characteristics**

<b>Characteristic</b>	<b>Value</b>
Category	6a
Bandwidth, MHz	500
Connection style	Shielded
Connector type	IDC-IDC
Connector material in connector	Phosphor bronze
Contact coating material	Gold (50 micro-inches)
Number of cable connections	Not less than 1000
Housing material	Zinc-aluminum alloy
Color	Metallic
Compliance	Exceeds standards: ISO / IEC 11801, EN 50173 and TIA / EIA-568
Supported applications	10BASE-T, 100BASE-TX, 100BASE-T4, 1000BASE-T, 10G-BASE-T, ATM-25, ATM-51, ATM-155, 100VG-AnyLan, TR-4, TR-16 Active, TR-16 Passive
Temperature range	Storage from -40 to + 70 °C. Operation from -10 to +60 °C
Packaging	Individual - PE bag
Warranty	5 years
Permissible diameter of conductors	23-26AWG